

## THE BUDBURY ROMAN COINS

Mark Corney

### Introduction

46 copper alloy Roman coins were examined. Of this total 40 were identifiable. The 6 illegible issues are of Æ 3 or 4 module and are probably of fourth century date based on the size of the flans. Many of the coins have been treated with an unknown substance which in some cases has obscured details such as mint marks. The coins are presented in chronological order in the catalogue and referenced, where possible, to RIC (Roman Imperial Coinage) or LRBC (Late Roman Bronze Coinage parts i and ii) and to the appropriate Reece Period (Reece 1991).

**The Catalogue** (numbers in brackets refer to BoA Museum Research Group listing)

- 1(13) Domitian. 81-96AD. As. Obv. Head right. Illegible. Rev. Standing figure. [ ] SC  
Reece period 4.
- 2(14) Antoninus Pius. 138-161AD. As. Obv. Head right. Illegible. Rev. Standing figure. [ ] SC  
Reece period 7.
- 3(6) Faustina II. 161-175AD. Sest. Obv. Head right. FAVSTINA AVGUSTA Rev. Juno stg. [IVNO]  
SC. As RIC 1645. Reece period 8.
- 4(11) Postumus. 260-268AD. Rad. Obv. Radiate bust right. IMP C POSTVMVS PF AVG  
Rev. Postumus stg left. P M TRP COS [II PP]. RIC 54. Reece period 13.
- 5(8) Victorinus. 268-270AD. Rad. Obv. Radiate bust right. [IMP C VI]CTORINVS PF AVG  
Rev. Pax stg left. [PAX] AVG. As RIC 117. Reece period 13.
- 6(19) Victorinus. 268-270AD. Rad. Obv. Radiate bust right. IMP C VIC[TORINVS PF AVG]  
Rev. Sol left. [ORIENS] AVG. RIC 115. Reece period 13.
- 7(29a) Victorinus. 268-270AD. Rad. Obv. Radiate bust right. IMP C VICTORINVS [PF AVG]  
Rev. Equity stg left. [AEQVITAS] AVG. As RIC 41. Reece period 13.
- 8(30a) Probably Victorinus. 268-270AD. Reece Period 13.
- 9(36a) Tetricus I. 270-274AD. Rad. Obv. Radiate bust left. IMP C TET[RICVS PF AVG]  
Rev. Illegible standing figure. Reece Period 13.
- 10(12) Claudius II. Commemorative c270-275AD. Rad. Obv. Radiate bust right. [DIVO CL]AVDIO  
Rev. Eagle. [CONSEC]RATIO. As RIC 266. Reece period 13.
- 11(22) Claudius II. Commemorative copy c270-275AD. Rad. Obv. Radiate bust right.  
Rev. Altar. Reece period 13.
- 12(23) Copy of Tetricus I. c270-275AD. Rad. Obv. Crude radiate bust. Rev. Figure of Pax. PAX [ ]  
Reece period 13.
- 13(28) Barbarous Radiate. c270-275. Reece period 13.
- 14(29b) Barbarous Radiate. c270-275. Reece period 13.
- 15(15) Barbarous Radiate. c270-275. Reece period 13.
- 16(7) Probus. 276-282AD. Rad. Obv. Radiate bust left holding spear. IMP C M AVR PROBVS AVG

- Rev. Probus shaking hands with Concordia CONCORD MILIT  
 PXXT in ex. Mint of Ticinum. RIC 332g. Reece period 14.
- 17(4) Constantine I. 307-337. Æ. Obv. Helmeted bust left. CONSTANTINVS PF AVG  
 Rev. Sol standing left. COMITI AVGG NN  
 RIC 166. Reece Period 15. Mint mark: \* in field. PLN in ex. Mint of London. 313-312.
- 18(9) Crispus. 317-326. Æ. Obv. Helmeted bust left. CRISPVS NOBIL C  
 Rev. Altar inscribed VOTIS XX. BEAT TRANQVILITAS  
 RIC 247. Reece Period 16. Mint mark PLON. Mint of London c321-323.
- 19(5) ?Constantine II as Caesar. Æ. Obv. Very worn and illegible  
 Rev. Camp gate. PROVIDENTIAE CAESS  
 As RIC 289. Reece Period 16. Mint mark R P (or T). Rome c324-330.
- 20(17) House of Constantine (possibly copy). Æ. Obv. Bust right. Illegible  
 Rev. Two soldiers standing either side of a single standard. [GLORIA EXERCITVS]  
 Reece Period 17. Mint mark illegible. c330-335.
- 21(1) Commemorative issue c330-335. Æ. Obv. Helmeted head of Constantinople left.  
 CONSTAN[TINOPOLIS]. Rev. She-wolf with twins. Reece Period 17. Mint mark TRP . Trier.  
 Hybrid with wrong reverse type for obverse. Mint period c330-335.
- 22(25) Æ Copy of 'VRBS ROMA' commemorative. c330-40.
- 23(32b) Æ Copy of 'VRBS ROMA' commemorative. c330-40.
- 24(32c) Æ Copy of 'CONSTANTINOPOLIS' commemorative. c330-40.
- 25(34a) Constans (as Augustus) 337-350. Æ. Obv. Bust right. CONSTANS PF AVG  
 Rev. Two soldiers standing either side of two standards. GLORIA EXERCITVS  
 Reece Period 17. Mint mark illegible. c337-346.
- 26(24) Constans (as Augustus) 337-350. Æ. Obv. Bust right. CONSTANS PF AVG  
 Rev. 2 Victories. VICTORIAE DD NN AVGG Q N  
 As LRBCi 860. Reece Period 17. Mint mark SMTSB, Thessalonika. 346-348.
- 27(36c) House of Constantine. Æ. Obv. Bust right. Legend illegible. Rev. 2 Victories.  
 [VICTORIAE DD NN AVGG Q N] Reece Period 17. Mint mark illegible. 346-348.
- 28(26) Constantius II (as Augustus) 337-361. Æ. Obv. Bust right. [DN CON]STANTIVS PF AVG  
 Rev. Soldier spearing fallen horseman. [FEL TEMP REPARATIO]  
 Reece Period 18. Mint mark illegible. c355-361.
- 29(16) Æ copy of Soldier spearing fallen horseman type as no. 28. c355-365. Reece Period 18.
- 30(36b) Æ copy of Soldier spearing fallen horseman type as no. 28. c355-365. Reece Period 18.
- 31(2) Valentinian I. 364-378. Æ. Obv. Bust right. [DN VALEN]TINIANVS PF AVG

Rev. Valentinian I advancing right, dragging captive and holding labarum.

GLORIA ROMANORVM. LRBCii 996. Reece Period 19. Mint mark <sup>\*</sup> in field to right of figure;  
C

SMAQP in ex. Aquileia. 367-378.

32(27) Valentinian I. 364-378. Æ. Obv. Bust right. [DN] VALENTINIANVS PF AVG  
Rev. Victory advancing left, holding wreath and palm. [SECVRITAS REIP]VBLICAE  
As LRBCii 519. Reece Period 19. Mint mark [ C]ON<sup>\*</sup>. Arles. 367-378.

33(32a) Valens 364-375. Æ. Obv. Bust right. DN VALENS PF AVG  
Rev. Victory advancing left, holding wreath and palm. [SECVRITAS REIP]VBLICAE  
As LRBCii 1303. Reece Period 19. Mint mark OF II in field. [ ]SIS[ ] in ex. Siscia. 367-375.

34(21) Valens 364-375. Æ. Obv. Bust right. DN VALEN[S PF AVG]  
Rev. Victory advancing left, holding wreath and palm. SECVRIT[AS REIPVBLICAE]  
As LRBC 483ii. Reece Period 19. Mint mark [ ]CON[ ]. Arles. 367-375.

35(29c) Valens 364-375. Æ. Obv. Bust right. [DN VALEN]S PF A[VG]  
Rev. Valens advancing right, dragging captive and holding labarum.  
[GLO]RIA RO[MANORVM.] Reece Period 19. Mint mark illegible. 367-378.

36(3) House of Valentinian 364-378. Æ. Obv. Bust right. Legend illegible.  
Rev. Emperor advancing right, dragging captive and holding labarum.  
[GLORIA ROMANORVM.] Reece Period 19. Mint mark illegible. 367-378.

37(20) House of Valentinian 364-378. Æ. Obv. Bust right. Legend illegible.  
Rev. Emperor advancing right, dragging captive and holding labarum.  
[GLORIA ROMANORVM.] Reece Period 19. Mint mark illegible. 367-378.

38(34b) House of Valentinian 364-378. Æ. Obv. Bust right. Legend illegible.  
Rev. Emperor advancing right, dragging captive and holding labarum.  
[GLORIA ROMANORVM.] Reece Period 19. Mint mark illegible. 367-378.

39(18) House of Valentinian 364-378. Æ. Obv. Bust right. Legend illegible.  
Rev. Victory advancing left, holding wreath and palm. [SECVRITAS REIPVBLICAE]  
Reece Period 19. Mint mark illegible. 367-378.

40(10) House of Valentinian 364-378. Æ. Obv. Bust right. Legend illegible.  
Rev. Illegible. Reece Period 19. Mint mark illegible. 367-378.

41(31) Æ. Illegible. Possibly House of Constantine.

42(33) Æ. Illegible. Possibly House of Constantine.

43(30b) Æ. Illegible. Fourth century.

44(35) Æ. Illegible. Fourth century.

45(37a) Æ. Illegible. Fourth century.

46(37b) Æ. Illegible. Fourth century.

## DISCUSSION

The assemblage has a profile typical of later Romano-British rural settlements where regular coin use and loss only commences in the latter part of the 3<sup>rd</sup> century AD, Reece period 13 (Figure 1, Table 1).

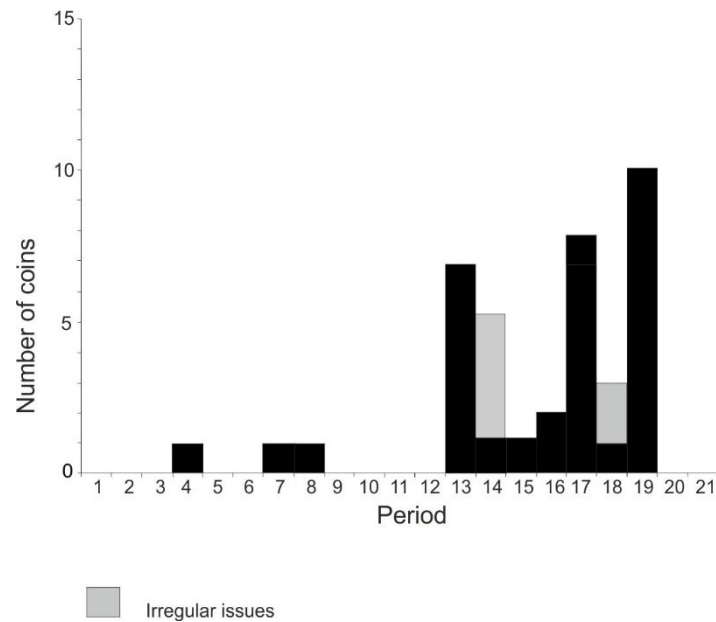


Figure 1. Identifiable Roman coins from Budbury area by Reece period.

The loss pattern throughout the 4<sup>th</sup> century follows that displayed by other rural settlements in western Britain with peaks in period 17 (330-348) and period 19 (364-378). The largest single group comes from period 19, with 10 issues of Valens and Valentinian 1. The dominance of issues of this period is in close accord with the pattern noted by Moorehead (2001) from other assemblages in Wiltshire and immediate environs. The losses per mill for this period in Wiltshire average 218.2 against the national average of 118 (*ibid.*, 90). The loss figures per mill from Budbury are presented in Table 1 and the peak for period 19, at 217.39, is in close accord with Moorehead's observations for Wiltshire.

Period	1	2	3	4	5	6	7	8	9	10	11
	-	-	-	21.73	-	-	21.73	21.73	-	-	-
12	13	14	15	16	17	18	19	20	21	4 <sup>th</sup> cent	Total
-	152.17	130.43	21.73	43.47	173.91	65.21	217.39	-	-	131.12	1000

Table 1. Coin loss per mill.

## References

- Moorehead, T. S. N. 2001 Roman Coin finds from Wiltshire. In P. Ellis (ed), *Roman Wiltshire and After: Papers in Honour of Ken Annable*; pp85-105.
- Reece, R. 1991 *Roman Coins from 140 sites in Roman Britain*.